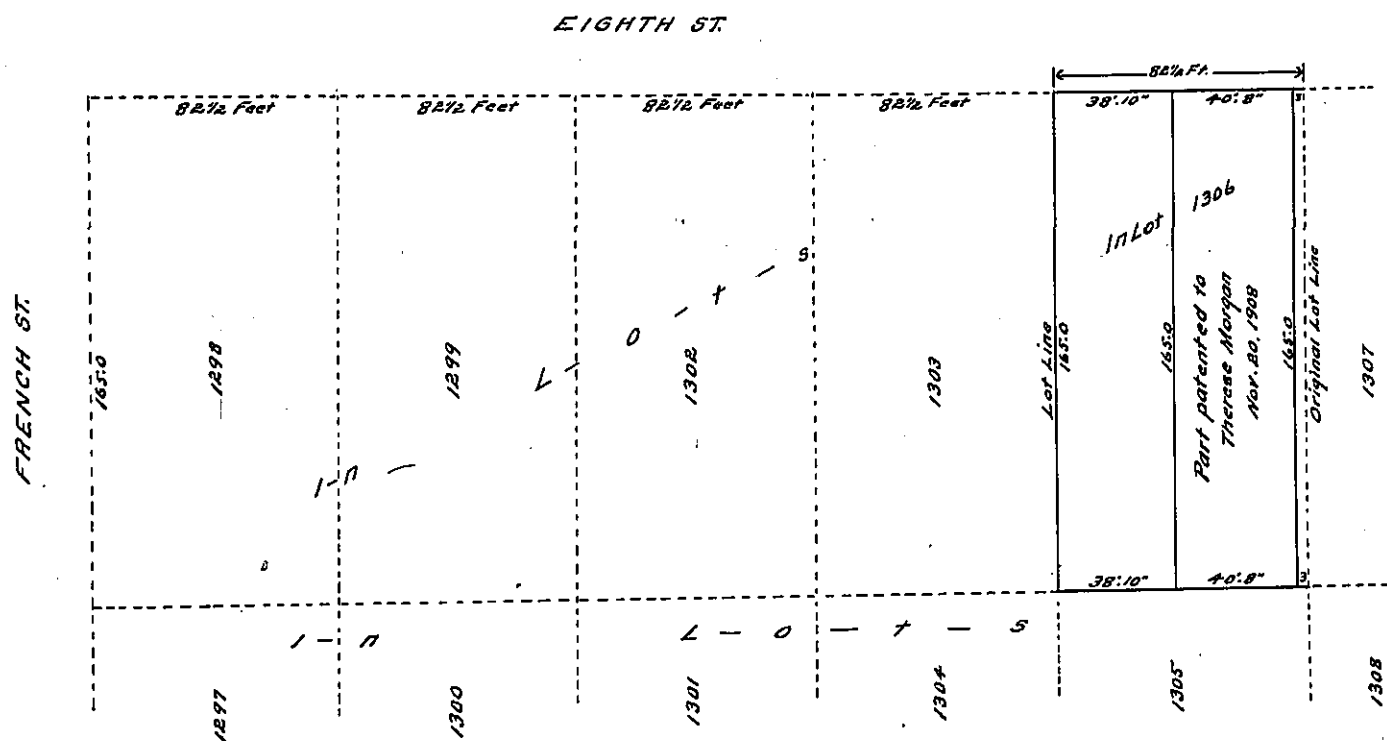


Scale 50 Feet to 1 inch



A Draft of that part of In Lot No 1306 in the City of Erie, in Erie County Pa.  
 for which a patent has this day been granted to Therese Morgan of that City, on her application duly  
 filed in the Department of Internal Affairs of Penna. under date of November 16, 1908.

Constructed by

J. Sutton Wall

Chief Draftsman

Nov. 20, 1908

IN TESTIMONY that the above is a copy of the original remaining on file in the Department of  
 Internal Affairs of Pennsylvania, made conformably to an Act of Assembly  
 approved the 16th day of February, 1833, I have hereunto set my Hand  
 and caused the Seal of said Department to be affixed at Harrisburg, this  
 twenty-third day of February 1910

*Henry Houch*  
 Secretary of Internal Affairs.